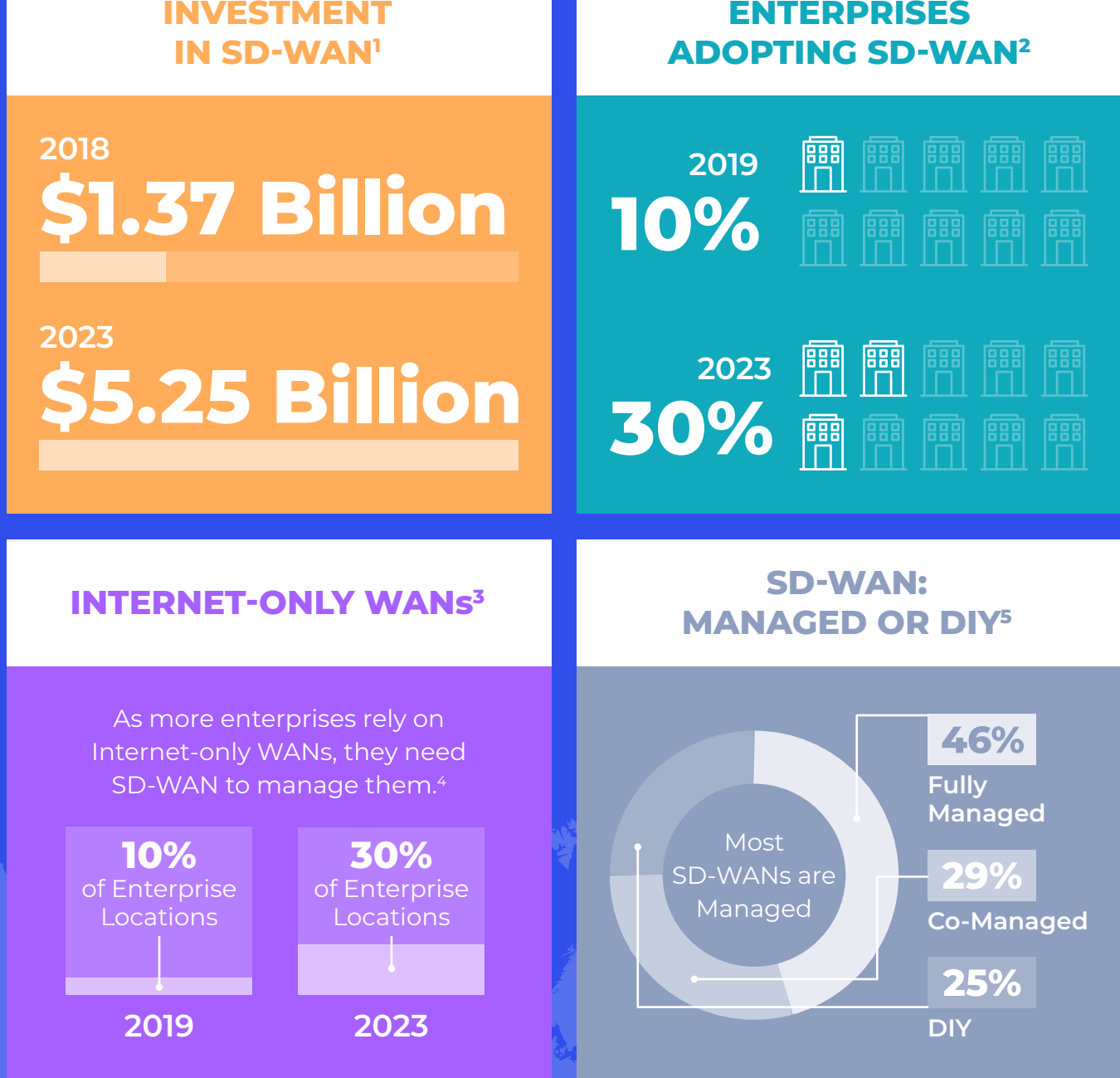


The Future of the WAN is SD-WAN and SASE

Global SD-WAN Growth



What's Driving Demand for SD-WAN



The Future of SD-WAN Is SASE: Secure Access Service Edge

As we rely on an increasingly distributed workforce, security at the edge becomes even more of an issue. SASE—Secure Access Service Edge or “Sassy”—addresses this challenge by tightly converging network and security functions.



SASE will be the dominant consumption model for WAN edge for new and refresh deployment by 2023.⁶

Why Choose RapidScale for SD-WAN and SASE



¹ IDC Infrastructure Forecast: SD-WAN market 2019

^{2,3} Gartner, 2019 Forecast Analysis: Enterprise Network Connectivity Growth Trends, Worldwide

⁴ Gartner, 2021 Strategic Roadmap for SASE Convergence, March 2021

⁵ IDC MarketPulse, 2020, 'New Normal' Puts SD-WAN Digital Transformation in the Fast Lane

⁶ Gartner, Initial Secure Access Service Edge Forecast, August 2020